

CERTIFICATE OF LOCATION OF GOVERNMENT CORNER

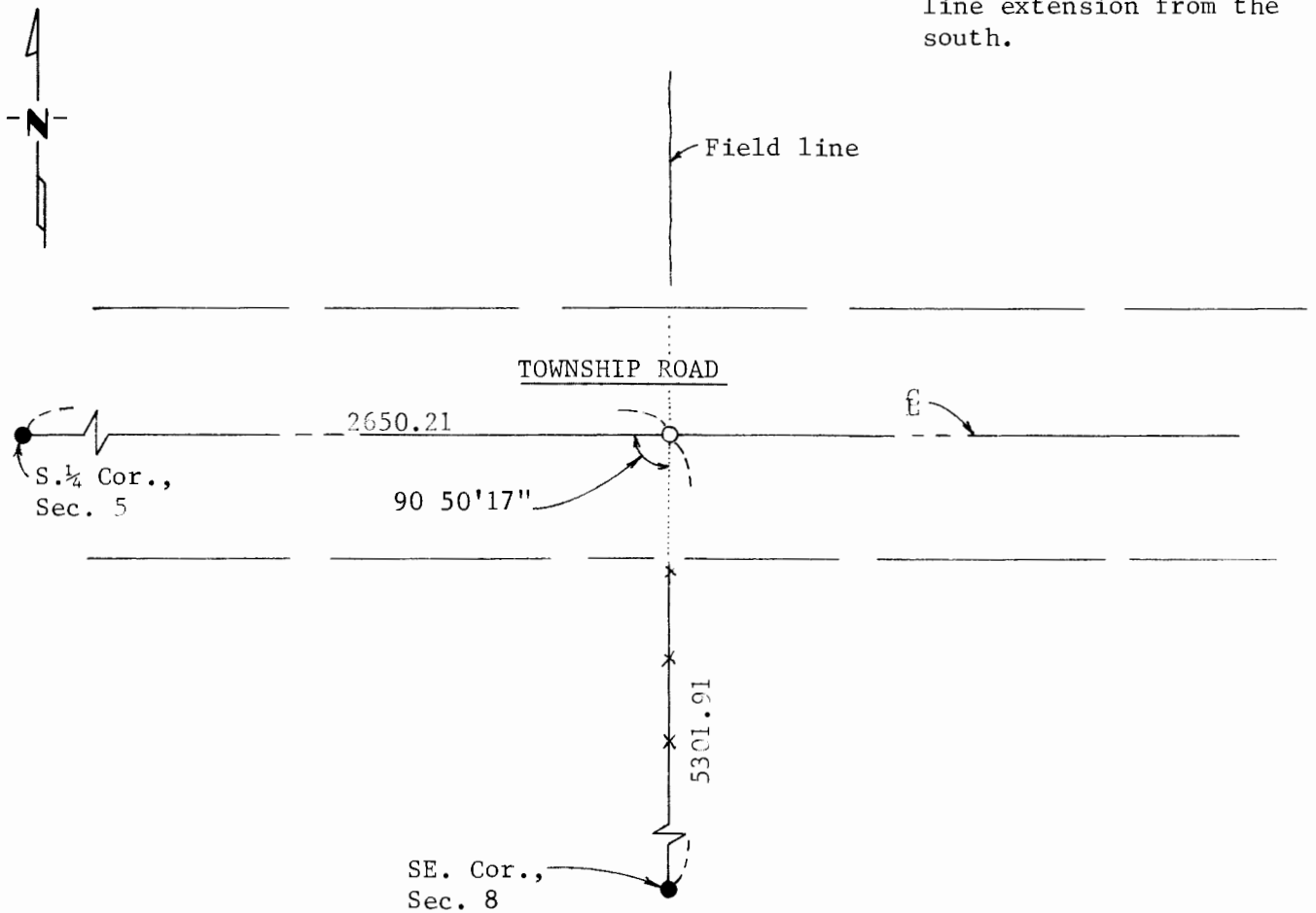
Southeast _____ Corner of Section 5, Township 108 N., Range 40 W., 5th P.M.

STATE OF MINNESOTA, County of Murray

At the corner location shown on the sketch:

- On _____ found a _____
DATE
- left monument as found, lowered monument, removed monument (explain)
- On 10/20/82 placed a 1/2" iron reinforcing bar with "Martin L.S. 12967" cap,
DATE for stone of record
after extensive excavation, reset corner by evidence: 6 Township Road E.- W. &*

SKETCH OF REFERENCE TIES *in line with existing fence line extension from the south.



Statement of evidence relative to this corner location is on back of page.

I hereby certify that this document and the data contained herein was prepared by me or under my direct supervision.

[Signature] 11/2/82
SIGNATURE DATE

Registration No. 12967

- Land Surveyor, Professional Engineer
- County Surveyor, County Engineer

OFFICE OF THE REGISTER OF DEEDS
County of Murray

I hereby certify that this document was filed in the Reg. of Deeds office at _____ .M. on the _____ day of _____ A.D., 19 _____

Register of Deeds _____

By _____, Deputy

DOCUMENT NO. _____